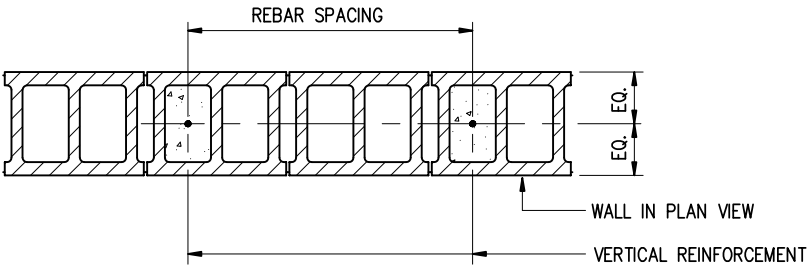


MASONRY WALL SCHEDULE

WALL MARK	CMU WALL THICKNESS	VERTICAL REINFORCING		TYPE	REMARKS
		SIZE	SPACING		
MW1	8"	#X	@ 16" o.c.	1	
MW2	8"	#X	@ 24" o.c.	1	
MW3	8"	#X	@ 32" o.c.	1	
MW4	8"	#X	@ 40" o.c.	1	
MW5	8"	#X	@ 48" o.c.	1	
MW6	12"	#X	@ 16" o.c.	1	
MW7	12"	#X	@ 24" o.c.	1	
MW8	12"	#X	@ 32" o.c.	1	

- NOTES:
1. SP – INDICATES MASONRY WALLS WHICH REQUIRE SPECIAL MASONRY INSPECTION.
  2. ALL REINFORCED WALLS TO HAVE BOND BEAMS AT FLOOR LINES, ROOF LINES, AT TOP OF WALLS AND AT TOP OF PARAPETS.
  3. SEE STRUCTURAL AND ARCHITECTURAL DRAWNGS AND SPECIFICATIONS FOR REQUIRED HORIZONTAL JOINT REINFORCING, BOND BEAMS AND ADDITIONAL VERTICAL REINFORCEMENT.
  4. PROVIDE DOWELS WITH HOOKS INTO FOUNDATION AT ALL VERTICAL REINFORCEMENT. DOWELS TO MATCH VERTICALS IN SIZE AND SPACING.
  5. ALL CELLS CONTAINING VERTICAL REINFORCEMENT SHALL BE SOLID GROUTED FULL HEIGHT.



WALL TYPE 1

SINGLY REINFORCED WALLS

MASONRY WALL SCHEDULE

SCALE: 1=1

**Disclaimer note**  
This detail must not be used without the final and complete review and evaluation by the design professional. The design professional assumes total and final responsibility for this detail as explained in Responsibilities and Legal Notices in the axiompai.com website. Please remove the review text boxes and this disclaimer note after review.

